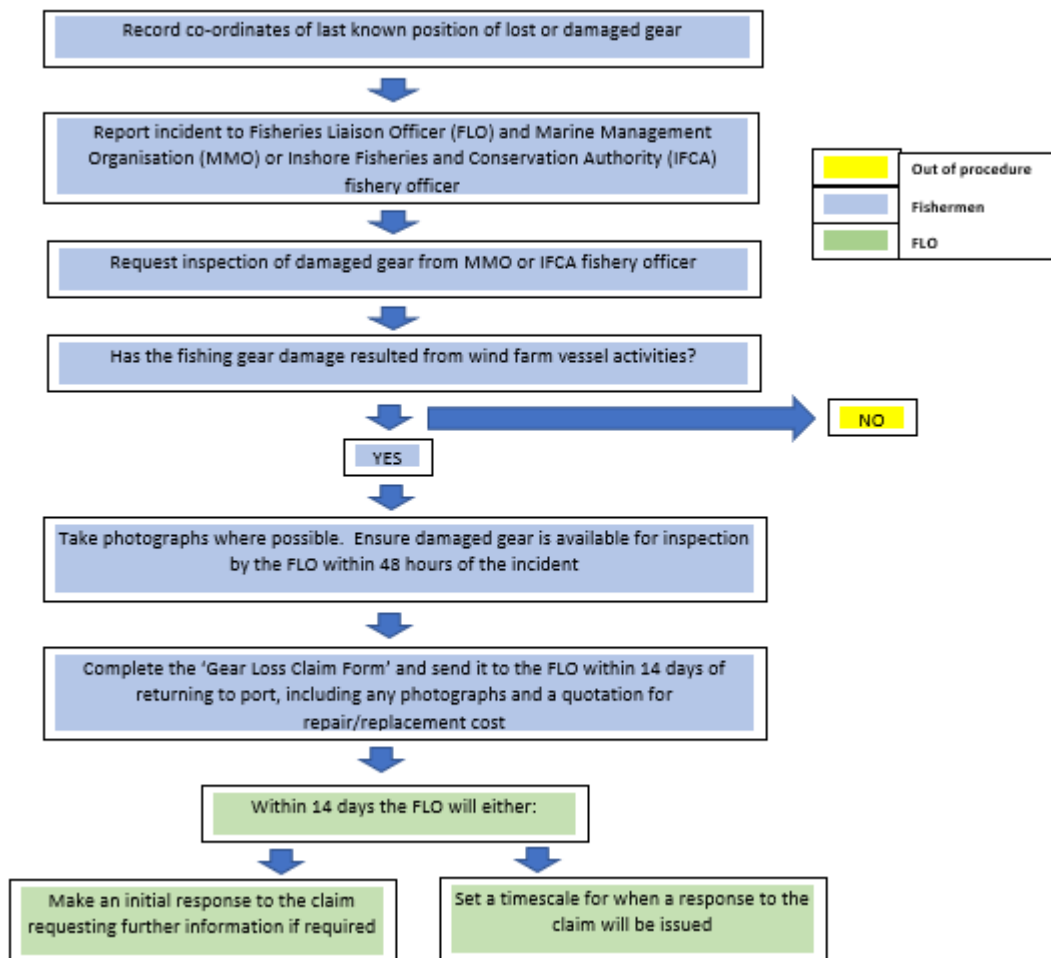


# LOST AND DAMAGED FISHERIES GEAR CLAIM FORM

[HTTPS://SOFIAWINDFARM.COM/LATEST/PUBLICATIONS-DOCUMENTS/](https://sofiawindfarm.com/latest/publications-documents/)



## CLAIMANT & VESSEL DETAILS

Name of Skipper/ Owner	
Name of vessel and registration number	
Contact details of skipper/ owner	
Home Port	

<b>Fishing Association</b>	
<b>Length of vessel (m)</b>	
<b>Design of vessel</b>	
<b>Description of deck layout</b>	
<b>GEAR DETAILS</b>	
<b>General description</b>	
<b>Number of pots per fleet</b>	
<b>Fleet length</b>	
<b>Number of fleets</b>	
<b>Number of surface markers</b>	
<b>Description of surface markers</b>	
<b>INCIDENT DETAILS</b>	
<b>Date and time of where incident occurred</b>	
<b>Co-ordinates of where incident occurred (lat and long- WGS84 Degrees Decimal Minutes)</b>	
<b>Water depth</b>	

<b>Weather conditions at time of incident</b>					
<b>Description of how the incident occurred and seabed type if known (e.g. shot around a wreck, direction gear was shot, description of damage to gear)</b>  <b>Description of any actions taken in any attempts to recover the fishing gear.</b>					
<b>Description of creel gear lost or damaged. Include details of item (e.g. pots, buoys, lines), type (e.g. size, weight), manufacturer, age of gear, number of items, and repair replacement cost</b>					
<b>Item</b>	<b>Type</b>	<b>Manufacturer</b>	<b>Age of gear</b>	<b>Number</b>	<b>Repair/ replacement cost</b>
<b>Replacement or repair cost of the components lost</b>					
<b>Any additional description of gear lost or damaged or estimated catch loss</b>					
<b>Any other comments</b>					
<b>Return Form to:</b>		Precision Marine Survey Limited Church Farm, Main Road, Thorngumbald, East Yorkshire United Kingdom HU12 9NE			