



The Future is Bright

Community Calendar 2022



FOR YOUR INFORMATION

All of the companies operating on the major industrial sites on Teesside take safety and emergency response very seriously, with companies working very closely together. Everyone is firmly committed to a policy which ensures the safety and health of employees, neighbours and customers as well as everyone associated with our operations.

There are well established and regularly reviewed emergency plans which have been developed jointly with all the emergency services and these are exercised frequently to ensure that risks are kept to an absolute minimum in the unlikely event of a major incident.

In accordance with these policies, our safety alarms are tested on a regular and routine basis. At Wilton and Billingham these tests take place every Tuesday morning between 9am and 10am.

Throughout this calendar we have highlighted the dates and times of these tests during 2022. Should you hear an on-site alarm at any other time, be informed of an incident or simply suspect that one might have occurred, please follow the safety advice below as a precautionary measure until you receive further information.



Be assured that the professional expertise of all the emergency services is always available, with the back-up support of the local authorities.

YOUR SAFETY IS OUR PARAMOUNT CONCERN

If you smell gas or are worried about gas safety, call 0800 111 999 at any time of the day or night.



SAFETY ADVICE

- Go immediately into a house or building.
- Close all windows and doors.
- Switch off ventilation and air conditioning systems.
- Stay indoors and listen to BBC Tees (95FM) and Zetland FM (105FM) for further information. Monitor official social media accounts, particularly on Zetland FM. BBC TV and ITV may also provide up to date information.
- Please stay calm and co-operate fully with any instructions given by the emergency services.
- Remain indoors until the incident is over.



This calendar has been produced by Waldron Communications Ltd in conjunction with NEPIC, representing the single largest cluster of chemical, pharmaceutical and process companies in the UK. Visit us at www.nepic.co.uk.

Designed by houseoftype.co.uk

For Safety information 24 hours a day please contact:

FREephone 0800 374791

FOR OTHER WILTON, BILLINGHAM AND NORTH TEES ENQUIRIES:

(01642) 212273

To all our Friends and Neighbours welcome to the 33rd Community Calendar

The last couple of years have certainly been a test for even the most optimistic of people as we have all been impacted by the pandemic.

For the 2022 calendar we have once again turned to our young people for a brighter outlook in the times ahead.

We asked for their illustrations on the theme of "The future is bright because..." leaving them to explain why.

As their fantastic pictures and explanations show, they remain full of hope and optimism and there's surely a lesson in that for every one of us.

Thanks again to all the companies on the main Wilton International, Billingham, and North Tees sites who sponsor this Calendar and to the schools for encouraging pupils to take part.

All those whose work is displayed here have received gift tokens to spend as they wish, and the participating schools are also rewarded for their involvement, for which we are very grateful.

The companies showing true community spirit and commitment this year are:

**Sembcorp Energy UK • SABIC UK Petrochemicals • Huntsman Polyurethanes UK
Ensus UK • CF Fertilisers • Alpek Polyester UK • Anglo American
Suez Recycling and Recovery UK • Enva Wood Recycling • RWE/Sofia Offshore Wind Farm
Mitsubishi Chemical UK • Falck Fire Services UK • Exolum**

As always, this calendar is delivered to around 20,000 of the households closest to the Wilton International, Billingham, and North Tees sites.

Please keep it on display in your home. It includes lots of useful information and details of the practical actions that would need to be taken in the unlikely event of a major emergency at any of the sites that would require a response by people in the neighbouring communities.

Each calendar month also displays the times of the weekly and quarterly alarm tests which we recognise are often audible to people living nearby.

On behalf of all the employees across the sites, we send our best wishes for a Merry Christmas and we hope you have a Happy New Year.



Andy Koss
CEO UK and Middle East



Lucy Robins, Age 9
Billingham South
Community Primary School



Leah Fox, Age 8
Dormanstown Primary
Academy



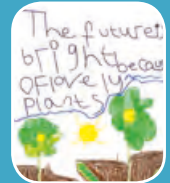
Pippa Hepplewhite, Age 6
Billingham South
Community Primary School



Tegan Smith, Age 10
High Clarence Primary
School



Gypsy Reynolds, Age 10
Dormanstown Primary
Academy



Deacon Voss, Age 17
Kirkleatham Hall School



Harvey Farmer, Age 7
Green Gates Primary School



Charlotte Aulsberry, Age 5
Wilton Primary Academy



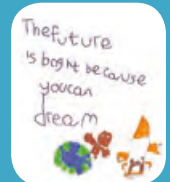
Shaun McMaster, Age 10
High Clarence Primary
School



Freya Palforth, Age 7
Wilton Primary Academy



Pixie Bracchi, Age 9
Green Gates Primary School



Bradley Graham, Age 14
Kirkleatham Hall School



JANUARY

FUTURE
Venus



FUTURE
Venus

Mars

Earth

Sun

Mercury



Mercury

Jupiter

Moons

Jupiter

Moons

Saturn

Sun

Uranus



Saturn

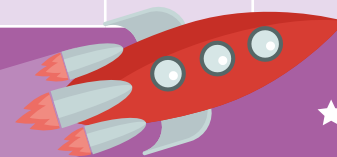
Uranus

FUTURE



FUTURE

Sat 1	Sat 8	Sat 15	Sat 22	Sat 29
Sun 2	Sun 9	Sun 16	Sun 23	Sun 30
Mon 3	Mon 10	Mon 17	Mon 24	Mon 31
Bank Holiday				
Tue 4 Plant Alarm Tests 9-10am	Tue 11 Plant Alarm Tests 9-10am	Tue 18 Plant Alarm Tests 9-10am	Tue 25 Plant Alarm Tests 9-10am	 <p>Richard Carpenter Onshore Civils Package Manager Sofia Offshore Wind Farm</p>
Wed 5 N. Tees Site Alarm Test 10am	Wed 12 N. Tees Site Alarm Test 10am	Wed 19 N. Tees Site Alarm Test 10am	Wed 26 N. Tees Site Alarm Test 10am	
Thurs 6	Thurs 13	Thurs 20	Thurs 27	
Fri 7	Fri 14	Fri 21	Fri 28	



"The future is bright because we will go to space"

Lucy Robins, Age 9

Billingham South Community Primary School



“The future is bright because I can play on my swings with my friends”

Pippa Hepplewhite, Age 6
 Billingham South Community Primary School

FEBRUARY





Tue 1 Plant Alarm Tests 9-10am	Tue 8 Plant Alarm Tests 9-10am	Tue 15 Plant Alarm Tests 9-10am	Tue 22 Plant Alarm Tests 9-10am	
Wed 2 N. Tees Site Alarm Test 10am	Wed 9 N. Tees Site Alarm Test 10am	Wed 16 N. Tees Site Alarm Test 10am	Wed 23 N. Tees Site Alarm Test 10am	
Thurs 3	Thurs 10	Thurs 17	Thurs 24	
Fri 4	Fri 11	Fri 18	Fri 25	 Duncan Smith Area Project Director Anglo American
Sat 5	Sat 12	Sat 19	Sat 26	
Sun 6	Sun 13	Sun 20	Sun 27	
Mon 7	Mon 14	Mon 21	Mon 28	





MARCH



Tue 1 Plant Alarm Tests 9-10am	Tue 8 Plant Alarm Tests 9-10am	Tue 15 Plant Alarm Tests 9-10am	Tue 22 Plant Alarm Tests 9-10am	Tue 29 Plant Alarm Tests 9-10am
Wed 2 N. Tees Site Alarm Test 10am Quarterly Alarm Tests And Exercise 11.30am	Wed 9 N. Tees Site Alarm Test 10am	Wed 16 N. Tees Site Alarm Test 10am	Wed 23 N. Tees Site Alarm Test 10am	Wed 30 N. Tees Site Alarm Test 10am
Thurs 3	Thurs 10	Thurs 17	Thurs 24	Thurs 31
Fri 4	Fri 11	Fri 18	Fri 25	 Ian O'Donnell UK & I Operations Manager Exolum
Sat 5	Sat 12	Sat 19	Sat 26	
Sun 6	Sun 13	Sun 20	Sun 27 Mother's Day	
Mon 7	Mon 14	Mon 21	Mon 28	

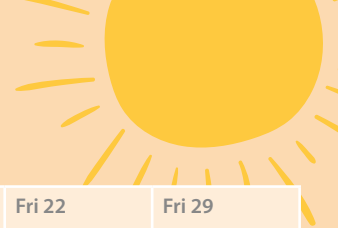
"My future is bright because of my friends and family"



Leah Fox, Age 8
Dormanstown Primary Academy





APRIL



Fri 1	Fri 8	Fri 15 Good Friday	Fri 22	Fri 29
Sat 2	Sat 9	Sat 16	Sat 23	Sat 30
Sun 3	Sun 10	Sun 17 Easter Sunday	Sun 24	
Mon 4	Mon 11	Mon 18 Easter Monday	Mon 25	 <p>Gary Jones Site Manager Enva Wood Recycling</p>
Tue 5 Plant Alarm Tests 9-10am	Tue 12 Plant Alarm Tests 9-10am	Tue 19 Plant Alarm Tests 9-10am	Tue 26 Plant Alarm Tests 9-10am	
Wed 6 N. Tees Site Alarm Test 10am	Wed 13 N. Tees Site Alarm Test 10am	Wed 20 N. Tees Site Alarm Test 10am	Wed 27 N. Tees Site Alarm Test 10am	
Thurs 7	Thurs 14	Thurs 21	Thurs 28	

“The future is bright because I can go places again”

Tegan Smith, Age 10
High Clarence Primary School





MAY



Sun 1	Sun 8	Sun 15	Sun 22	Sun 29
Mon 2	Mon 9	Mon 16	Mon 23	Mon 30
Bank Holiday				
Tue 3 Plant Alarm Tests 9-10am	Tue 10 Plant Alarm Tests 9-10am	Tue 17 Plant Alarm Tests 9-10am	Tue 24 Plant Alarm Tests 9-10am	Tue 31 Plant Alarm Tests 9-10am
Wed 4 N. Tees Site Alarm Test 10am	Wed 11 N. Tees Site Alarm Test 10am	Wed 18 N. Tees Site Alarm Test 10am	Wed 25 N. Tees Site Alarm Test 10am	 <p>Melanie Jury President Mitsubishi Chemical UK</p>
Thurs 5	Thurs 12	Thurs 19	Thurs 26	
Fri 6	Fri 13	Fri 20	Fri 27	
Sat 7	Sat 14	Sat 21	Sat 28	

“The future is bright because of lovely plants”

Deacon Voss, Age 17
Kirkleatham Hall School



JUNE



Wed 1 N. Tees Site Alarm Test 10am Quarterly Alarm Tests And Exercise 11.30am	Wed 8 N. Tees Site Alarm Test 10am	Wed 15 N. Tees Site Alarm Test 10am	Wed 22 N. Tees Site Alarm Test 10am	Wed 29 N. Tees Site Alarm Test 10am
Thurs 2	Thurs 9	Thurs 16	Thurs 23	Thurs 30
Spring Bank Holiday				
Fri 3	Fri 10	Fri 17	Fri 24	
Queen's Platinum Jubilee Bank Holiday				
Sat 4	Sat 11	Sat 18	Sat 25	
Sun 5	Sun 12	Sun 19	Sun 26	
Father's Day				
Mon 6	Mon 13	Mon 20	Mon 27	
Tues 7 Plant Alarm Tests 9-10am	Tues 14 Plant Alarm Tests 9-10am	Tues 21 Plant Alarm Tests 9-10am	Tues 28 Plant Alarm Tests 9-10am	

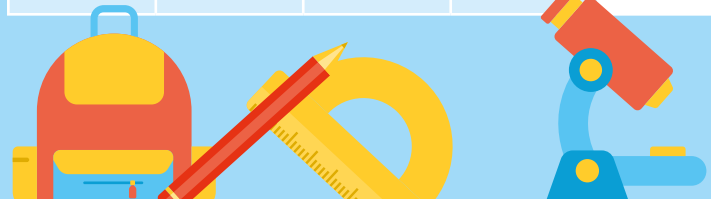


Keith Brudenell
Operations Manager
Billingham Site
CF Fertilisers



“The future is bright because we can all go to school”

Harvey Farmer, Age 7
Green Gates Primary School






“The future is bright because electric cars are better for our environment”

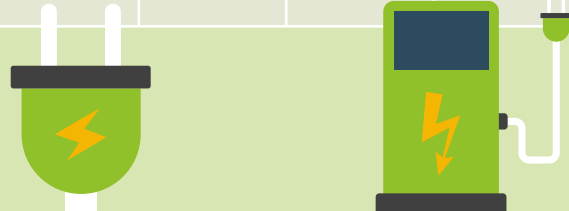
Gypsy Reynolds, Age 10
Dormanstown Primary Academy



JULY



Fri 1	Fri 8	Fri 15	Fri 22	Fri 29
Sat 2	Sat 9	Sat 16	Sat 23	Sat 30
Sun 3	Sun 10	Sun 17	Sun 24	Sun 31
Mon 4	Mon 11	Mon 18	Mon 25	 <p>Jorge Villanueva UK Director Alpek Polyester UK</p>
Tue 5 Plant Alarm Tests 9-10am	Tue 12 Plant Alarm Tests 9-10am	Tue 19 Plant Alarm Tests 9-10am	Tue 26 Plant Alarm Tests 9-10am	
Wed 6 N. Tees Site Alarm Test 10am	Wed 13 N. Tees Site Alarm Test 10am	Wed 20 N. Tees Site Alarm Test 10am	Wed 27 N. Tees Site Alarm Test 10am	
Thurs 7	Thurs 14	Thurs 21	Thurs 28	





“The future is bright because I can see family and friends,
and go to school without COVID”

Shaun McMaster, Age 10
High Clarence Primary School

AUGUST



Mon 1	Mon 8	Mon 15	Mon 22	Mon 29 Bank Holiday
Tue 2 Plant Alarm Tests 9-10am	Tue 9 Plant Alarm Tests 9-10am	Tue 16 Plant Alarm Tests 9-10am	Tue 23 Plant Alarm Tests 9-10am	Tue 30 Plant Alarm Tests 9-10am
Wed 3 N. Tees Site Alarm Test 10am	Wed 10 N. Tees Site Alarm Test 10am	Wed 17 N. Tees Site Alarm Test 10am	Wed 24 N. Tees Site Alarm Test 10am	Wed 31 N. Tees Site Alarm Test 10am
Thurs 4	Thurs 11	Thurs 18	Thurs 25	 Robert Peasgood Managing Director Falck Fire Services UK
Fri 5	Fri 12	Fri 19	Fri 26	
Sat 6	Sat 13	Sat 20	Sat 27	
Sun 7	Sun 14	Sun 21	Sun 28	

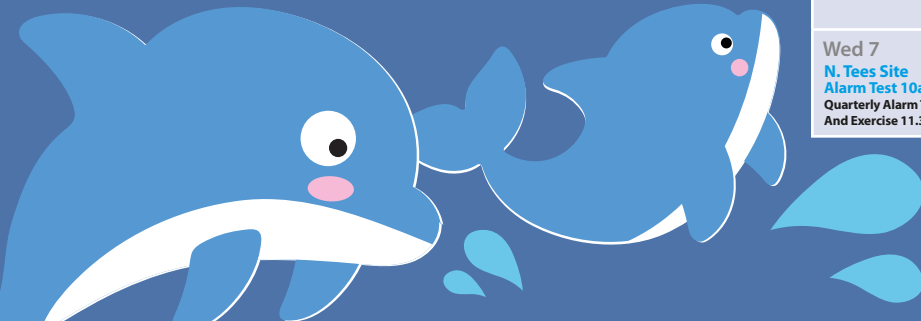


SEPTEMBER



“I drew dolphins because I have never seen them and now we can travel again so I really want to go and see them in the wild”

Charlotte Aulsberry, Age 5
Wilton Primary Academy



Thurs 1	Thurs 8	Thurs 15	Thurs 22	Thurs 29
Fri 2	Fri 9	Fri 16	Fri 23	Fri 30
Sat 3	Sat 10	Sat 17	Sat 24	
Sun 4	Sun 11	Sun 18	Sun 25	 Peter Kay Operations Director Ensus UK
Mon 5	Mon 12	Mon 19	Mon 26	
Tues 6 Plant Alarm Tests 9-10am	Tues 13 Plant Alarm Tests 9-10am	Tues 20 Plant Alarm Tests 9-10am	Tues 27 Plant Alarm Tests 9-10am	
Wed 7 N. Tees Site Alarm Test 10am Quarterly Alarm Tests And Exercise 11.30am	Wed 14 N. Tees Site Alarm Test 10am	Wed 21 N. Tees Site Alarm Test 10am	Wed 28 N. Tees Site Alarm Test 10am	






“The future is bright because I am going to be a nurse. I’m going to help people get better. Then I’m going to give people medicine and I will put bandages on people’s legs. But first I’m going to college so I can train and learn to be a nurse.”

Freya Playforth, Age 7
Wilton Primary Academy

OCTOBER



Sat 1	Sat 8	Sat15	Sat 22	Sat 29
Sun 2	Sun 9	SSun16	Sun 23	Sun 30
Mon 3	Mon 10	Mon 17	Mon 24	Mon 31
Tue 4 Plant Alarm Tests 9-10am	Tue 11 Plant Alarm Tests 9-10am	Tue 18 Plant Alarm Tests 9-10am	Tue 25 Plant Alarm Tests 9-10am	 Daren Smith <i>Site Director</i> <i>SABIC UK</i>
Wed 5 N. Tees Site Alarm Test 10am	Wed12 N. Tees Site Alarm Test 10am	Wed 19 N. Tees Site Alarm Test 10am	Wed 26 N. Tees Site Alarm Test 10am	
Thurs 6	Thurs 13	Thurs 20	Thurs 27	
Fri 7	Fri 14	Fri 21	Fri 28	

Daren Smith
Site Director
SABIC UK





“The future is bright because we can reunite and stay strong

Pixie Bracchi, Age 9
Green Gates Primary School



NOVEMBER

Tue 1 Plant Alarm Tests 9-10am	Tue 8 Plant Alarm Tests 9-10am	Tue 15 Plant Alarm Tests 9-10am	Tue 22 Plant Alarm Tests 9-10am	Tue 29 Plant Alarm Tests 9-10am
Wed 2 N. Tees Site Alarm Test 10am	Wed 9 N. Tees Site Alarm Test 10am	Wed 16 N. Tees Site Alarm Test 10am	Wed 23 N. Tees Site Alarm Test 10am	Wed 30 N. Tees Site Alarm Test 10am
Thurs 3	Thurs 10	Thurs 17	Thurs 24	
Fri 4	Fri 11	Fri 18	Fri 25	 Marcus Bowman Site Operations Leader Huntsman Polyurethanes UK
Sat 5	Sat 12	Sat 19	Sat 26	
Sun 6	Sun 13	Sun 20	Sun 27	
Mon 7	Mon 14	Mon 21	Mon 28	



DECEMBER



Thurs 1	Thurs 8	Thurs 15	Thurs 22	Thurs 29
Fri 2	Fri 9	Fri 16	Fri 23	Fri 30
Sat 3	Sat 10	Sat 17	Sat 24	Sat 31
Sun 4	Sun 11	Sun 18	Sun 25	Christmas Day
Mon 5	Mon 12	Mon 19	Mon 26	Boxing Day
Tue 6 Plant Alarm Tests 9-10am	Tue 13 Plant Alarm Tests 9-10am	Tue 20 Plant Alarm Tests 9-10am	Tue 27 Plant Alarm Tests 9-10am	Bank Holiday
Wed 7 N. Tees Site Alarm Test 10am Quarterly Alarm Tests And Exercise 11.30am	Wed 14 N. Tees Site Alarm Test 10am	Wed 21 N. Tees Site Alarm Test 10am	Wed 28 N. Tees Site Alarm Test 10am	 <p>Alex Biggins Plant Manager Suez Recycling and Recovery UK</p> 

The future
is bright because
you can
dream



“The future is bright because you can dream”

Bradley Graham, Age 14
Kirkleatham Hall School



FOR YOUR INFORMATION

All of the companies operating on the major industrial sites on Teesside take safety and emergency response very seriously, with companies working very closely together. Everyone is firmly committed to a policy which ensures the safety and health of employees, neighbours and customers as well as everyone associated with our operations.

There are well established and regularly reviewed emergency plans which have been developed jointly with all the emergency services and these are exercised frequently to ensure that risks are kept to an absolute minimum in the unlikely event of a major incident.

In accordance with these policies, our safety alarms are tested on a regular and routine basis. At Wilton and Billingham these tests take place every Tuesday morning between 9am and 10am.

Throughout this calendar we have highlighted the dates and times of these tests during 2022. Should you hear an on-site alarm at any other time, be informed of an incident or simply suspect that one might have occurred, please follow the safety advice below as a precautionary measure until you receive further information.



Be assured that the professional expertise of all the emergency services is always available, with the back-up support of the local authorities.

YOUR SAFETY IS OUR PARAMOUNT CONCERN

If you smell gas or are worried about gas safety, call 0800 111 999 at any time of the day or night.



SAFETY ADVICE

- Go immediately into a house or building.
- Close all windows and doors.
- Switch off ventilation and air conditioning systems.
- Stay indoors and listen to BBC Tees (95FM) and Zetland FM (105FM) for further information. Monitor official social media accounts, particularly on Zetland FM. BBC TV and ITV may also provide up to date information.
- Please stay calm and co-operate fully with any instructions given by the emergency services.
- Remain indoors until the incident is over.



For Safety information 24 hours a day please contact:

FREEPHONE 0800 374791

FOR OTHER WILTON, BILLINGHAM AND NORTH TEES ENQUIRIES:

(01642) 212273

